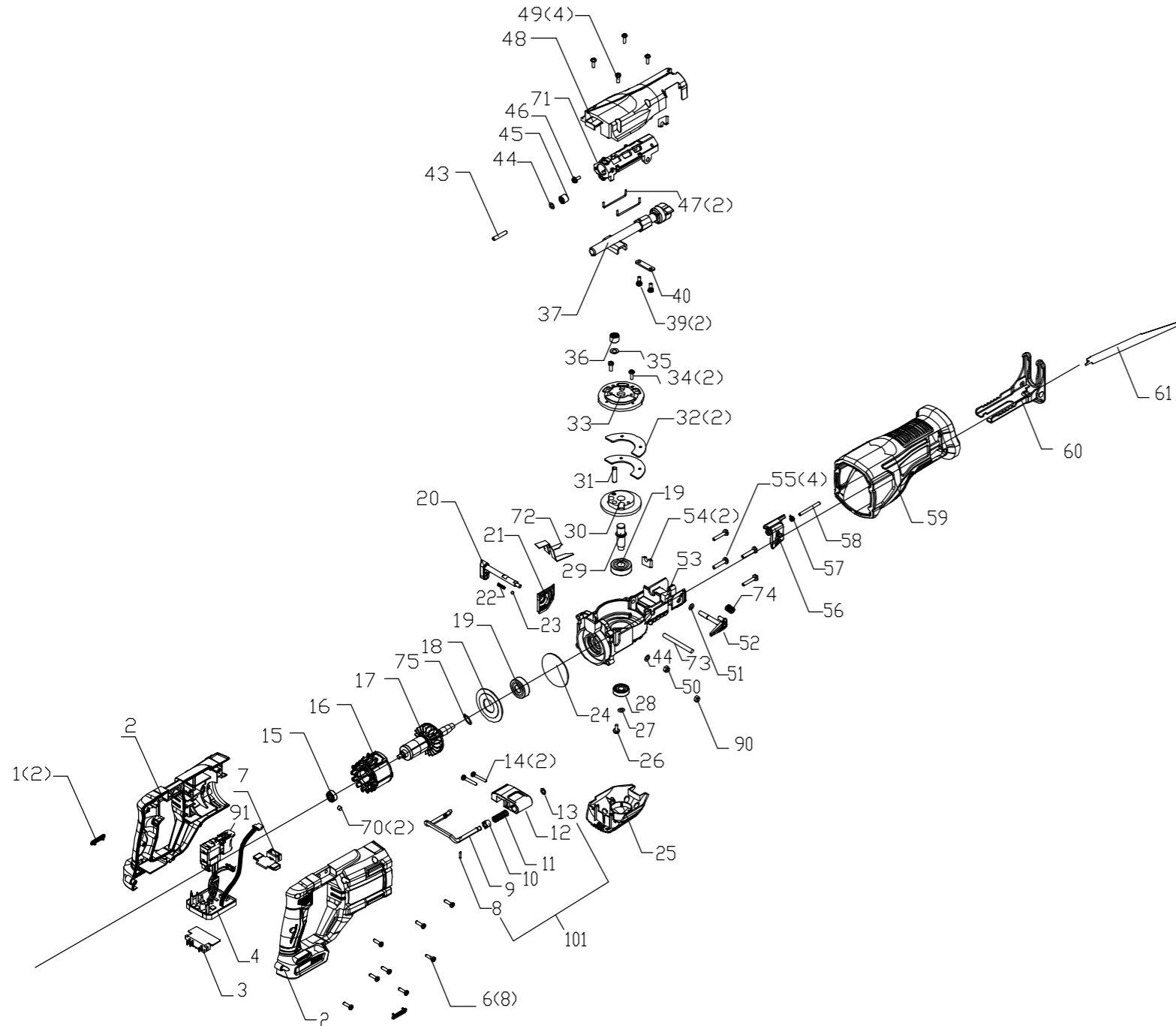


DX52B

Version:00
Date:200811



Model No	Position No	Material No	Description	QTY	Remarks	Recommended order ratio	Serial No
DX52B	1	50040778	Dustproof Cover	2			
DX52B	2	50042012	Left/Right Housing	1			
DX52B	3	50041227	Terminal	1			
DX52B	4	50042002	Control Board	1		3%	
DX52B	6	50041618	Screw ST3.9X16	8			
DX52B	7	50041990	Lock Knob	1			
DX52B	8	50041976	Taper Pin	1			
DX52B	9	50043031	Hook wire	1			
DX52B	10	50041989	Orientation Sleeve	1			
DX52B	11	50041974	Spring	1			
DX52B	12	50041998	Location Block	1			
DX52B	13	50037241	Retaining Ring	1			
DX52B	14	50042017	Screw ST4.8*32	2			
DX52B	15	50038296	Ballbearing 606-2Z	1		3%	
DX52B	16	50042003	Stator	1		3%	
DX52B	17	50042448	Motor	1		3%	
DX52B	18	50042015	Bearing cover	1			
DX52B	19	60034149	Ball Bearing	2		1%	
DX52B	20	50041980	Gear Changing Lever	1			
DX52B	21	50042005	Position Piece	1		3%	
DX52B	22	60039903	Compression Spring	1			
DX52B	23	60039904	Steel Ball	1			
DX52B	24	50042000	O-Rings $\Phi 31.5 \times 1.8$	1			
DX52B	25	50041996	Plug	1			
DX52B	26	50038384	screw	1			
DX52B	27	60050096	Washer	1			
DX52B	28	60051247	Ball Bearing 609	1		3%	
DX52B	29	50042001	Spindle	1		1%	
DX52B	30	50042010	Gear	1		3%	
DX52B	31	50041982	driving shaft	1			
DX52B	32	50041986	Press Plate	2			
DX52B	33	50041999	Pendulum Plate	1		3%	
DX52B	34	60051560	Screw M4X14	2			
DX52B	35	50001003	Washer	1			
DX52B	36	50041975	needle bearing	1		3%	
DX52B	37	50042004	Reciprocating Shaft Set	1		5%	
DX52B	39	50042013	screw	6			
DX52B	40	50041979	Press Plate	1			
DX52B	43	50041994	pin	1			
DX52B	44	50022016	Washer	2			
DX52B	45	50042006	needle bearing	1		3%	
DX52B	46	50041987	screw	1			
DX52B	47	50042011	steel wire	2			
DX52B	48	50041981	Top Cover	1			
DX52B	50	50041866	Nut	1			
DX52B	51	50003112	E-ring	1			
DX52B	52	50041983	Button Set	1			
DX52B	53	50044376	Gear Bbox Unit	1		1%	(AR,RU)
DX52B	54	50041993	Felt seal	2			
DX52B	55	60028483	Screw	4			
DX52B	56	50042007	Spanner	1			
DX52B	57	50041995	Torsional Spring	1			
DX52B	58	50041984	pin	1			
DX52B	59	50044441	Fore Housing Cover	1			(AR,RU)
DX52B	60	50044433	Support Plate	1			(AR,RU),(AE-BS)
DX52B	60	50041997	Hold down plate	1			
DX52B	61	50041991	Saw 302	1		5%	
DX52B	70	50000791	Rubber sheath	2			
DX52B	71	50042243	Bracket	1			
DX52B	72	50043237	Foam	1			
DX52B	73	50041985	pin	1			
DX52B	74	50042014	Press spring	1			
DX52B	75	50003093	Ring	2			
DX52B	90	50002546	Nut	1			
DX52B	91	50041335	Switch	1			
DX52B	101	50042028	Hook Set	1			